

Other models in this range:
MC 46 - MC 1210

Gourmet Cube Ice Machine up to 170 Kg



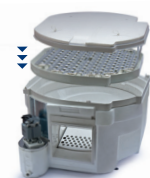
Proximity condenser air filter (AS version only)



Front ON-OFF Switch



MC 16 "SHORT" with B 393 (sold separately)



Circular evaporator



Optional

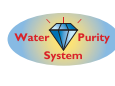


ABS plastic cover

Features

- Produces individual Gourmet crystal clear supercubes
- Up to 170 kg (374 lbs) daily ice cubes production
- ABS plastic top cover
- Dual ice discharge possibility: vertical ice-chute (standard) or side ice-chute (optional)
- "Universal Standard 30" width fits on most popular ice storage bins
- Resistant stainless steel exterior
- Computer controlled with advanced diagnostics capabilities
- Front access condenser air filter, removable and washable (air cooled version only)
- Easily accessible front panel mount ON-OFF Switch
- Routine Maintenance visible alarm light on front panel
- AgION antimicrobial agent embedded in moulded plastics parts
- CFC-free R-404 A Refrigerant
- 2 years manufacturer warranty

MC 16 "SHORT" Technologies



								 [WxDxH mm] 772x608x711
		10°: 10°C			21°: 15°C			
		[kg]	[lbs]	N°*	[kg]	[lbs]	N°*	
MC S 16 Short AS		170	375	21250	150	331	18750	[WxDxH inches] 30 3/8"x23 15/16"x28"
MC S 16 Short WS		172	379	21500	162	357	20250	
MC M 16 Short AS		170	375	8500	150	331	7500	 [v/Hz/ph] 230/50/1
MC M 16 Short WS		172	379	8600	162	357	8100	
MC L 16 Short AS		153	337	3920	140	309	3590	 R 404 A
MC L 16 Short WS		155	341	3974	146	322	3744	

Small Gourmet 8 g	Medium Gourmet 20 g	Large Gourmet 39 g
25,5 x mm 22,5 mm x 21 mm 1" x 14/16" x 13/16"	34,5 mm x 30,5 mm x 29,5 mm 1 6/16" x 1 3/16" x 1 3/16"	41,5 mm x 38 mm x 35 mm 1 10/16" x 1 8/16" x 1 6/16"

This product qualifies for the following listings:



2 Years Warranty

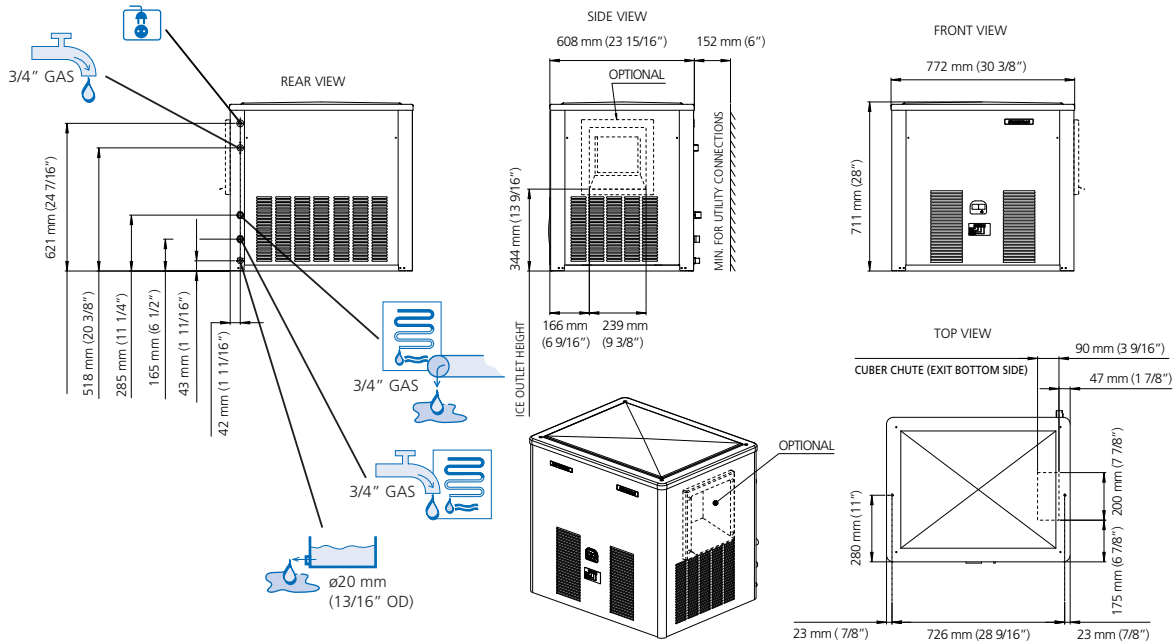
Subject to certain limitations and exclusions

Certified ISO 9001:2000

www.scotsman-ice.com
www.scotsman-ice.it

Models and specifications are subject to change without notice.

Gourmet Cube Ice Machine up to 170 Kg



MC 16 SHORT AIR COOLED

°C	°F				kg
	50°	60°	70°	90°	
10°	170	164	158	146	kg
50°	374	362	348	322	lbs
21°	156	150	144	132	kg
70°	344	331	317	291	lbs
32°	134	128	122	110	kg
90°	295	282	269	242	lbs
38°	122	116	110	98	kg
100	269	256	242	216	lbs

MC 16 SHORT WATER COOLED

°C	°F				kg
	50°	60°	70°	90°	
10°	172	165	158	144	kg
50°	379	363	348	317	lbs
21°	169	162	155	141	kg
70°	372	357	341	311	lbs
32°	167	160	153	139	kg
90°	368	352	337	306	lbs
38°	164	157	150	136	kg
100	362	346	330	299	lbs

Minimum	Maximum
10°C (50°F)	40°C (104°F)
5°C (41°F)	35°C (95°F)
-10%	+10%
1 BAR 14 psi	5 BAR 70 psi

	Compressor	Capacity	Ice Size	Power	FUSE	Energy	Water	Ice	Weight	Weight
	Icon	[Btu/h] [W]	[Ømm ²]	[W]		[kWh] - 100 Kg	[l/h]	[gal/h]	[kg] [lbs]	[kg] [lbs]
MC S 16 Short AS	AS	13160 3860	3x1.5 - 5x1.5	1450	20 A	22,75	17	4,5	75 165	85 187
MC S 16 Short WS	WS	13160 3860	3x1.5 - 5x1.5	1000	20 A	18,2	137,5	36,3	74 163	84 185
MC M 16 Short AS	AS	13160 3860	3x1.5 - 5x1.5	1300	20 A	22,3	15,8	4,2	75 165	85 187
MC M 16 Short WS	WS	13160 3860	3x1.5 - 5x1.5	1000	20 A	16,3	131,5	34,7	74 163	84 185
MC L 16 Short AS	AS	13160 3860	3x1.5 - 5x1.5	1450	20 A	21,5	13,3	3,5	75 165	85 187
MC L 16 Short WS	WS	13160 3860	3x1.5 - 5x1.5	1000	20 A	16,5	116	30,6	74 163	84 185

CONTACT POINTS:

Europe
Scotsman Europe-Frimont S.p.A.
Via Puccini, 22
20010 Pogliano (Milano) Italy
Ph: (+39) 02-93960208
Fax: (+39) 02-93960201
scotsman.europe@frimont.it

Asia and Pacific
Scotsman Ice Systems-Frimont S.p.A. (R.O.)
627A Aljunied Road #04-04 Biztech Centre
Singapore 389842
Ph: (+65) 6738 5393
Fax: (+65) 6738 1959
scotsice@singnet.com.sg

China
Scotsman Ice Systems (Shanghai)
Room 2503, Building 2
20 Xuhong Middle Road, Xuhui District
Shanghai China 200235
Main line: (+86) 21 61313200
Fax: (+86) 21 61313330
scotsman.shanghai@scotsman-china.com

Middle East & N. Africa
Scotsman-Frimont Regional Office (MENA)
POBox: 42026, HFZA Sharjah, UAE
Ph: (+97)16 5262 944-16 5262 945
Fax: (+97)16 5262 946-Cell: 1 505 505 980
Skype: mdawood331393
m.dawood@frimont.ae
scotsman@frimont.ae-scotice@frimont.ae

South Africa
SCOTSMAN Ice Systems SA Pty. Ltd
No. 4, Lakovlow Business Park
8-10 Yaldwyn Road - Jet Park
P.O. Box 44 - Riverclub 2149
Ph: (+27)11 789 8400-11 789 8914
Fax: (+27)11 789 8411
scotsman@telkomsa.net

Spain
Scotsman España, S.L.U. c/ Galapagar, 12
Poligono Industrial Ventorro del Cano
28925 Alcorcon (Madrid)
Ph: (+34)91-1109796
Fax: (+34)91-6337423
scotsman@scotsman-espana.es
www.scotsman-espana.es