

**Scale Ice
Makers Units**

**Unité de
Production
de Glace
en Ecailles**

**Scherbeneis
Produktions-
einheit**

**Fabricador
de Hielo
en Escamas**

**Unità di
Produzione
Ghiaccio
in scaglie**

Fresh Water	Sea Water	24h		[v/Hz/ph]	[WxDxH mm]	[WxDxH inches]	R404a or R22		
		Ambient T. +25°C (77°F) Water T. +15°C (59°F)	Ambient T. +32°C (90°F) Water T. +21°C (70°F)						
		[kg]	[lbs]	[kg]	[lbs]				
EVE 200 AS	EVE 200 AS SW	1.900	4.188	1.600	3.530	400/50Hz/3ph 230/60Hz/3ph	2150x1900x1360	84 5/8" x 74 3/4" x 53 1/2"	R404a or R22
EVE 300 AS	EVE 300 AS SW	2.900	6.392	2.300	5.070	400/50Hz/3ph 230/60Hz/3ph	2150x1900x1530	84 5/8" x 74 3/4" x 60 1/4"	R404a or R22
EVE 400 AS	EVE 400 AS SW	3.900	8.596	3.500	7.720	400/50Hz/3ph 230/60Hz/3ph	2150x1900x1750	84 5/8" x 74 3/4" x 68 7/8"	R404a or R22
EVE 650 AS	EVE 650 AS SW	6.200	13.665	5.800	12.790	400/50Hz/3ph 230/60Hz/3ph	2850x2250x1810	112 1/4" x 88 5/8" x 71 1/4"	R404a or R22
EVE 800 AS	EVE 800 AS SW	7.650	16.861	7.500	16.530	400/50Hz/3ph 230/60Hz/3ph	3450x1990x2020	135 7/8" x 78 3/8" x 79 1/2"	R404a or R22
EVE 1000 AS	EVE 1000 AS SW	9.800	21.599	9.000	19.840	400/50Hz/3ph 230/60Hz/3ph	4350x2310x2410	171 1/4" x 91" x 94 7/8"	R404a/R22/R717
EVE 1300 AS	EVE 1300 AS SW	12.500	27.550	11.000	24.250	400/50Hz/3ph 230/60Hz/3ph	4850x2310x2400	191" x 91" x 94 1/2"	R404a/R22/R717
EVE 1500 AS	EVE 1500 AS SW	15.000	33.060	13.500	29.760	400/50Hz/3ph 230/60Hz/3ph	4850x2310x2695	191" x 91" x 106 1/8"	R404a/R22/R717
EVE 2400 AS	EVE 2400 AS SW	23.000	50.692	21.000	46.290	400/50Hz/3ph 230/60Hz/3ph	6800x2340x2200 2250x2100x2200	267 3/4" x 92 1/8" x 86 5/8" 88 5/8" x 82 5/8" x 86 5/8"	R404a/R22/R717

1
Years Warranty
Ans de Garantie
Jahre Garantie
Años de Garantía
Anni di Garanzia

Subject to certain limitations and exclusions
Assujettie aux limites et exclusions prescrites
Abhängig von Bestimmten Einschränkungen und Ausnahmen
Sujeta a algunas limitaciones y exclusiones
Soggetta ad alcune limitazioni ed esclusioni



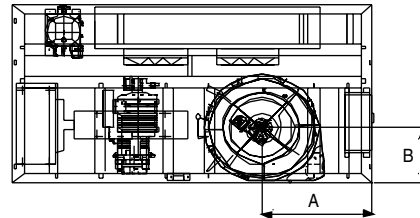
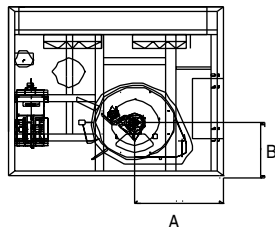
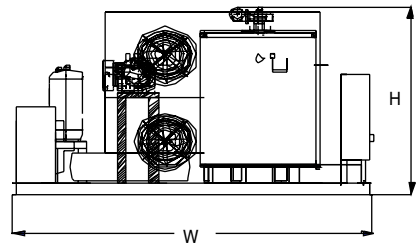
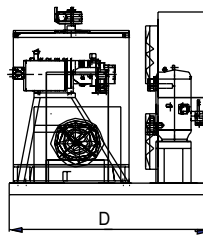
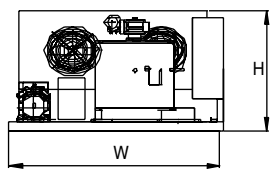
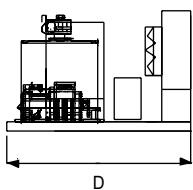
This product qualifies for the following listings:

EVE

LAND

EVE200/300/400/650

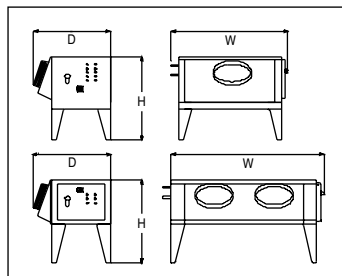
EVE800/1000/1300/1500



Fresh Water	Sea Water	Nominal Electrical Power (1)	W mm	D mm	H mm	A mm	B mm	Ice Outlet (ø mm)	Inlet Water	Overflow(ø mm)	[kg]	[lbs]	[kg] [lbs]
EVE 200 AS	EVE 200 AS SW	12,00	1900	1650	1160	750	435	420	1/2" gas	10	780	1.719	t.b.a.
EVE 300 AS	EVE 300 AS SW	16,00	1900	1650	1330	750	435	420	1/2" gas	10	800	1.763	t.b.a.
EVE 400 AS	EVE 400 AS SW	20,00	1900	1650	1550	750	435	420	1/2" gas	10	1.150	2.535	t.b.a.
EVE 650 AS	EVE 650 AS SW	35,00	2600	2000	1610	1035	545	670	1/2" gas	10	2.000	4.408	t.b.a.
EVE 800 AS	EVE 800 AS SW	35,00 (*)	3200	1740	1820	990	535	670	1/2" gas	10	2.200	4.849	t.b.a.
EVE 1000 AS	EVE 1000 AS SW	40,00 (*)	4100	2060	2210	1265	545	840	3/4" gas	10	2.950	6.502	t.b.a.
EVE 1300 AS	EVE 1300 AS SW	55,00 (*)	4600	2060	2200	1135	545	840	3/4" gas	10	3.750	8.265	t.b.a.
EVE 1500 AS	EVE 1500 AS SW	70,00 (*)	4600	2060	2495	1135	545	840	3/4" gas	10	4.300	9.477	t.b.a.
EVE 2400 AS	EVE 2400 AS SW	80,00 (*)	6500 1990	2150 1680	2000 2400	see split version	see split version	1030	3/4" gas	10	5050 2400	11.120 5.285	t.b.a.

1) Referred to fresh water versions

*Screw compressor



Model	Electrical Power KW	W mm	D mm	H mm	Net weight kg	Packing dimensions WxDxH
UC-200ASR	8,5	1390	870	1290	310	1500x1000x1450
UC-300ASR	11,4	1775	870	1290	430	1900x1000x1450
UC-400-ASR	14,4	2025	1070	1465	510	2200x1200x1600

Minimum	Maximum
2°C (36°F)	40°C (104°F)
5°C (41°F)	35°C (95°F)
-10%	+10%
1 BAR 14 psi	5 BAR 70 psi

Features: heavy basement frame in HIB iron, galvanized; AISI 304 Stainless steel evaporator complete of expansion valve /refrigerant level control (R404a/R22); base and cover in Peralluman; dosing water pump; dripping-pan; gear-motor with system for ice-scraper rotation; semi-hermetic /screw compressor; Liquid receiver and oil separator; Filters for suction and liquid lines; oil filters for version 1000/2400; Copper piping with valves on main components in order to ease maintenance; Air cooled condenser; Automatic electrical control panel complete of main switch, power and auxiliary contactors, voltmeter and ammeter, pressure switch (refrigerant high/low/oil), fan protections, ice-scraper protection, pump-down control. All versions are certified CE/PED.

Caractéristiques techniques: Structure portante HIB en acier galvanisé; évaporateur en acier inox AISI 304 complet de détendeur /contrôle de niveau (R404a/R22); base et couvercle en Peralluman; pompe dosage eau/sel; bassin écoulement eau; moteur qui entraîne fraise hélicoïdale acier inox; compresseur semi-hermétique/vis; réservoir de liquide et séparateur d'huile; filtres sur tuyaux aspiration et liquide; filtre huile pour modèles 1000/2400; tuyauterie en cuivre avec vanne sur les principaux composants pour simplifier l'entretien; condensateur à air; tableau électrique complet de interrupteur général, contacteurs puissance et auxiliaires, voltmètre et ampèremètre, pressostats (réfrigérant haute, basse et huile), protections ventilateurs et fraise, pump-down control. Tous les modèles sont certifiés CE/PED.

Technische Beschreibung: Trägerhäuse HIP aus verzinktem Stahl. Verdampfer aus AISI 304 Edelstahl komplett mit Expansionsventil und Kältemittelfüllstandsanzeige (R404a/R 22). Rahmen und Abdeckung aus Peralluman. Dosierpumpe für Salz /Wasser. Auffangschale. Getriebemotor mit Eisbrechereinheit. Halbhermetischer Verdichter oder Schraubenverdichter. Kältemittelsammler und Ölabscheider. Trockner in Saug- und Flüssigkeitsleitung. Ölfilter für die 1000/2400 Modelle. Absperrventile in den Kupferrohrleitungen für die leichte Wartung. Luftverflüssiger (AS). Elektromechanische Anzeige mit Hauptschalter, Leistungs- und Hilfsperschutz mit Spannungs- und Ampereanzeige, Druckschalter für (Hoch/Nieder/ Öl). Schutzvorrichtung für Lüfter und Eisbrecher, Pump-down Schaltung. Alle Modelle sind zertifiziert mit CE/PED.

Características técnicas: Estructura portante HIB de acero galvanizado; evaporador de acero AISI 304 compuesto de válvula termostática/control de nivel (R404a/R22); base y tapa de Peralluman; bomba alimentación agua/sal; bandeja desagüe; motor rotación rompe-hielo de acero inox; compresor semihermético/tornillo; reserva de líquido y separador aceite; filtros en tubería aspiración y líquido; filtro aceite para modelos 1000/2400; tubería en cobre con válvulas de parcialización en todos los componentes principales para simplificar el mantenimiento; condensador aire; cuadro eléctrico compuesto de interruptor general, contactores potencia y auxiliares, voltmetro y ampermetro, presostatos (refrigerante alta, baja y aceite), protecciones ventiladores y rompe-hielo, control pump-down. Todos los modelos están certificados CE/PED.

Caratteristiche tecniche: Struttura portante HIB in acciaio zincato; evaporatore in acciaio inox AISI 304 completo di valvola termostatica/regolatore di livello (R404a/R22); base e coperchio in Peralluman; pompa dosatrice acqua/sale; ghiotta raccogli condensa; motoriduttore per rotazione rompihiaccio in acciaio inox; compressore semi-hermetico/vite; ricevitore di liquido e separatore d'olio; filtri su mandata e aspirazione; filtro olio per modelli 1000/2400; tubazioni in rame con rubinetti di parzializzazione sui principali componenti per facilitare la manutenzione; condensatore ad aria; quadro elettrico completo di interruttore generale, contattore di potenza e ausiliari, voltmetro e amperometro, pressostati (refrigerante alta, bassa e olio), protezioni ventilatori e rompihiaccio, controllo pump-down. Tutte le macchine sono certificate CE/PED.



Scotsman®

The one the world relies on.

Ice Systems

Certified ISO 9001:2000

USA, Canada, Latin America
Scotsman Ice Systems USA
775 Corporate Woods Parkway
Vernon Hills, IL 60061
Ph: (+1) 847 215-4550
Fax (+1) 847 913-9844
customer.service@scotsman-ice.com

Europe
Scotsman Europe-Frimont S.p.A.
Via Puccini, 22
20010 Pogliano (Milano) Italy
Ph: (+39) 02-93960208
Fax: (+39) 02-93960201
scotsman.europe@frimont.it

Asia and Pacific
Scotsman Ice Systems-Frimont S.p.A. (R.O.)
627A Aljunied Road #04-04 Biztech Centre
Singapore 389842
Ph: (+65) 6738 5393
Fax: (+65) 6738 1959
scotsice@singnet.com.sg

China
Scotsman Ice Systems
(Shanghai) Co., Ltd
Room 405-407 Jing'an China Tower
1701 West Beijing Road-200040 Shanghai
Ph: (+86) 21-62476056-Fax: (+86) 21-62476126
scotsmansh@online.sh.cn

Middle East & N. Africa
Scotsman Ice Systems Dubai Office
P.o. Box 21648
Sharjah - U.A.E.
Mobile: Ph: (+971) 505505980
Fax (+971) 6-5654063
scotsman@eim.ae

ICE SYSTEMS
(Pty) Ltd
21 Atlas rd, Dunswart, Boksburg
P.O. Box 6766, Dunswart, 1058
Tel: (+27) 11-9185065
Fax: (+27) 11-9185068
www.icesystems.co.za